



**TELANGANA SOCIAL WELFARE RESIDENTIAL DEGREE and PG
COLLEGE FOR WOMEN, Mahendrahills at Ankushapur, DIST. MEDCHAL
(Affiliated to Osmania University)**



E-mail: prl-rdc-mhls-swrs@telangana.gov.in

Mobile No.:

9121004526

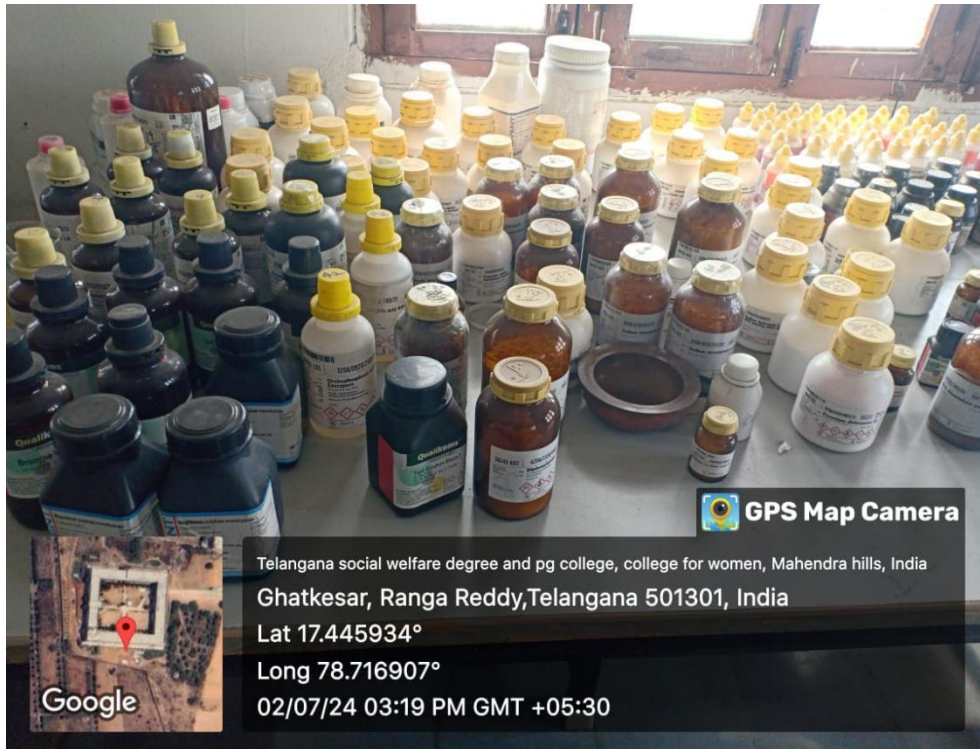
7.1.2 THE FACILITIES IN THE INSTITUTION FOR THE MANAGEMENT OF THE FOLLOWING TYPES OF DEGRADABLE AND NON-DEGRADABLE WASTE.AT TSWRDC, MAHENDRAHILLS

1. SOLID WASTE MANAGEMENT

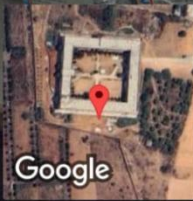


5. HAZARDOUS CHEMICALS AND RADIOACTIVE WASTE MANAGEMENT

Nishu
Principal
T.S. W.Res.
Degree College (Women)
Mahendra Hills, Hyderabad-500060



 **GPS Map Camera**



Google

Telangana social welfare degree and pg college, college for women, Mahendra hills, India
Ghatkesar, Ranga Reddy, Telangana 501301, India
Lat 17.445934°
Long 78.716907°
02/07/24 03:19 PM GMT +05:30



 **GPS Map Camera**



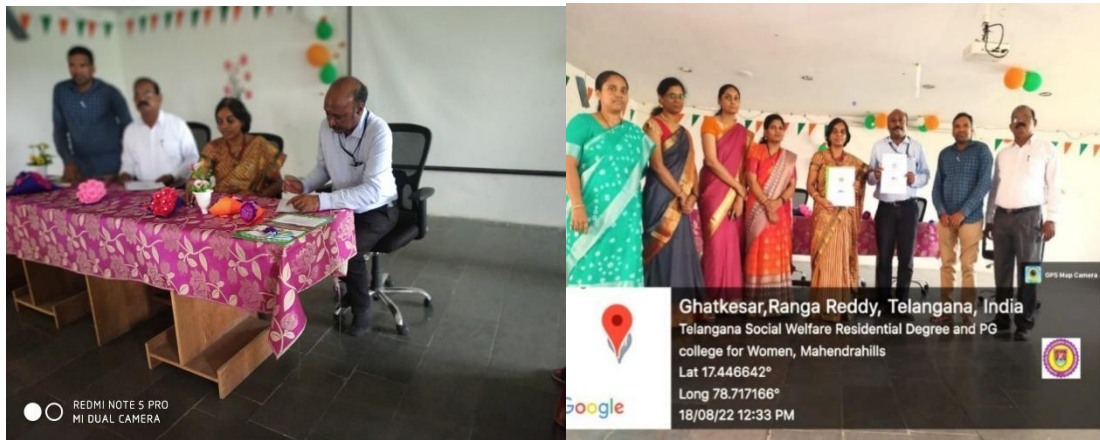
Google

Telangana social welfare degree and pg college, college for women, Mahendra hills, India
Ghatkesar, Ranga Reddy, Telangana 501301, India
Lat 17.445934°
Long 78.716907°
02/07/24 03:16 PM GMT +05:30

Nash
Principal
T.S.W.Res.
Degree College (Women)
Mahendra Hills, Hyderabad-500060



Signing of MoU with C-MET



Nash
Principal
T.S. W. Res.
Degree College (Women)
Mahendra Hills, Hyderabad-500060



Nrb

Principal
T.S.W.Res.

Degree College (Women)
Mahendra Hills, Hyderabad-500060

WATER CONSERVATION

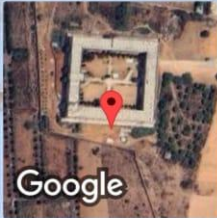


Neha
Principal
T.S.W.Res.
Degree College (Women)
Mahendra Hills, Hyderabad-500060

Drinking Water

TURN OFF
TAP WHEN
NOT
IN USE

 **GPS Map Camera**



Telangana social welfare degree and pg college, college for women, Mahendra hills, India

Ghatkesar, Ranga Reddy, Telangana 501301, India

Lat 17.445934°

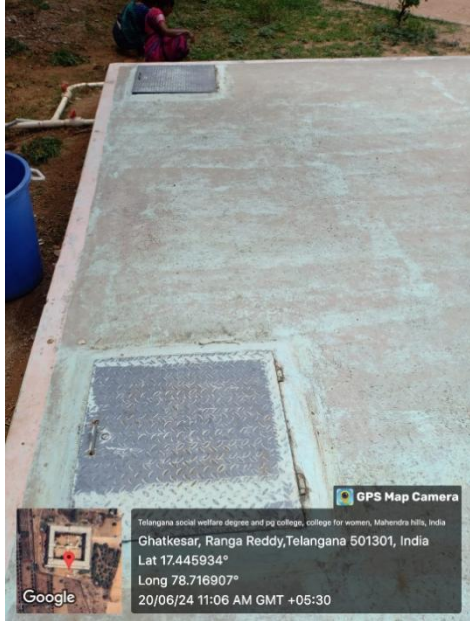
Long 78.716907°

24/06/24 12:01 PM GMT +05:30

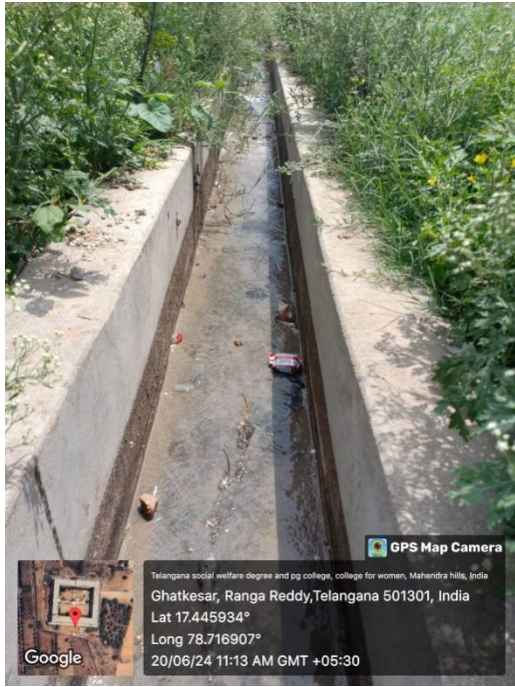


Principal
T.S. W. Res.

Degree College (Women)
Mahendra Hills, Hyderabad-500060



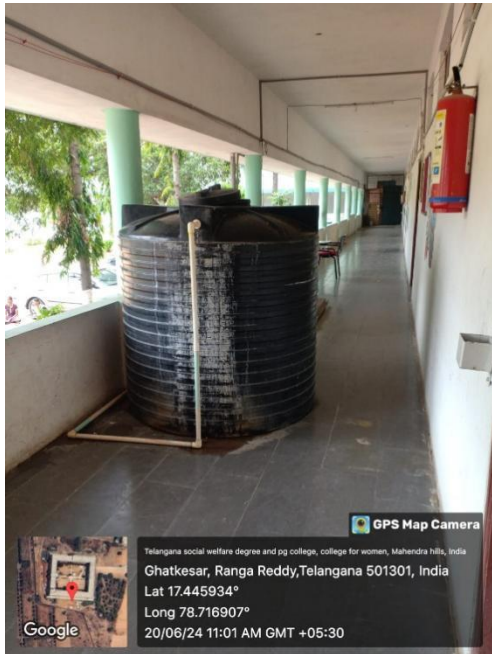
Nash
Principal
T.S.W.Res.
Degree College (Women)
Mahendra Hills, Hyderabad-500060



GPS Map Camera
 Telangana social welfare degree and pg college, college for women, Mahendra hills, India
 Ghatkesar, Ranga Reddy, Telangana 501301, India
 Lat 17.445934°
 Long 78.716907°
 20/06/24 11:13 AM GMT +05:30
 Google



GPS Map Camera
 Telangana social welfare degree and pg college, college for women, Mahendra hills, India
 Ghatkesar, Ranga Reddy, Telangana 501301, India
 Lat 17.445934°
 Long 78.716907°
 20/06/24 11:12 AM GMT +05:30
 Google



GPS Map Camera
 Telangana social welfare degree and pg college, college for women, Mahendra hills, India
 Ghatkesar, Ranga Reddy, Telangana 501301, India
 Lat 17.445934°
 Long 78.716907°
 20/06/24 11:01 AM GMT +05:30
 Google



GPS Map Camera
 Telangana social welfare degree and pg college, college for women, Mahendra hills, India
 Ghatkesar, Ranga Reddy, Telangana 501301, India
 Lat 17.445934°
 Long 78.716907°
 20/06/24 11:07 AM GMT +05:30
 Google

Neha
 Principal
 T.S. W. Res.
 Degree College (Women)
 Mahendra Hills, Hyderabad-500060



Nob
Principal
T.S. W. Res.
Degree College (Women)
Mahendra Hills, Hyderabad-500060

ENERGY CONSERVATION



Nsh
Principal
T.S. W. Res.
Degree College (Women)
Mahendra Hills, Hyderabad-500060

Electricity Bill of April

COMPULSARY ENCLOSER ALONG WITH EVERY MONTH'S ELECTRICAL CONSUMPTION CHARGES BILL AMOUNT REQUISITION							
Name of the Complex : SW Residential School/Junior College for Boys/Girls in (V) _____ Mandal in District <u>TSKWRD2 PGC (W) Mahendrabills, Ghatkesar</u>							
Sl No	Description of Appliance	Wattage in Watts	Nos	Period of Utilization.		No of Hours	Total WattHours consumption (3 X 4 X 7)
				From	To		
1	2	3	4	5	6	7	8
I	School Building						
1	Tube Lights	20	120	6am	10pm	10	24000
2	Any other lights of 150 Watts						
3	Ceiling Fans	55	84	6am	10pm	19	87780
4	Exhaust fans						
5	Computers	110	07	9am	5pm	6	4620
6	Any other Appliance of Watts Water Dispenser	580	02			02	2320
II	Dormitory Block						
1	Tube Lights	20	33	5am	9am	5	3300
2							
3	Any other lights of 150 Watts						
4							
5	Ceiling Fans	75	51	5am 5pm	9am 5am	10	38250
6	UPS Batteries	300	09	9am	9am	24	64800
7	Exhaust fans						
8							
9	Electrical Water Heater of Watts						
10	Refrigerators Lab, Wellness center	100	02	9am	9am	24	4800
11	Any other Appliance of Watts						
12							
III	Kitchen & Dining						
1	Tube Lights	20	10	7am	5pm	12	2400
2							
3	Any other lights of Watts						
4							
5	Ceiling Fans	55	04	6am	8pm	14	3080
6							
7	Exhaust fans						
8							
9	Electrical Grinders of Watts	200	01	5am	8am	3	600
10	Speakers	6000	01	5am	5.30 am	0.2	1200
11	any other appliance of Watts Whirlpool Balace	13	01	6am	7am	01	13
12	Mixer Blender	700	01	6am	7am	01	700
IV	External Appliances						
1	Street Lights of _____ Watts	45	03	6PM	5am	11	1485
2	Bore Well Pump Set of ----- HP	6220	01	5am 4PM	10PM 10PH	11	68420
3	Pump set of ---HP						

5	RO Plant of _____ LPH of Watts pumps	5000	01	6am 3pm	10am 3pm	9	45000
TOTAL CONSUMPTION IN WATTHOURS							376688
TOTAL CONSUMPTION IN KiloWattHours (total watthours/1000x 31 days)							11677.328
Electricity Unit Rate							11
TOTAL CONSUMPTION Charges for Estimated Consumption (Unit ratex total consumption in Kilo Watthours) =							128450.608
TOTAL CONSUMPTION Charges as per Electrical Department BILL =							128273
Difference in BILL =							117.608
6	General information ---- Category Supply II B Non Domestic / Commercial						
7	No of Students in the Institution	441	+ 46	+ 19			506
8	Water tankers purchased for the month	-	-	-	-	-	-
9	Municipal or Grammapanchayat Water connection availability. Yes or No., If Yes	-	-	-	-	-	-
10	Whether Solar Power is available in the Institution. if Yes Watts	-	-	-	-	-	-
v	Name and Designation of the person assigned to operate Electrical appliances and Water Supply system	D. Kumara Swamy K Lazar (Security)					K Lazar

16/12/2024
M. Vijaya
Principal
SW RSPDC (1) Mahendrabhills

NCCRAJ
Technical Assistant

Regional CoOrdinator

Nishu
Principal
T.S. W. Res.
Degree College (Women)
Mahendra Hills, Hyderabad-500060

Awareness program on Energy consumption



After the awareness program conducted in college among the students, The electricity bill for the following month was reduced.

Neha
Principal
T.S. W. Res.
Degree College (Women)
Mahendra Hills, Hyderabad-500060

Electricity bill of May

COMPULSARY ENCLOSER ALONG WITH EVERY MONTH'S ELECTRICAL CONSUMPTION CHARGES BILL AMOUNT REQUISITION							
Name of the Complex : SW Residential School/Junior College for Boys/Girls in (V) _____ Mandal in District <u>TSWRD2 PGC(W) Mahendrabills, Ghatkesar</u>							
Sl No	Description of Appliance	Wattage in Watts	Nos	Period of Utilization.		No of Hours	Total WattHours consumption (3 X 4 X 7)
				From	To		
1	2	3	4	5	6	7	8
I	School Building						
1	Tube Lights	20	120	6am	10pm	10	24000
2	Any other lights of 150 Watts						
3	Ceiling Fans	55	84	6am	10pm	19	87780
4	Exhaust fans						
5	Computers	110	07	9am	5pm	6	4620
6	Any other Appliance of Watts Water Dispenser	580	02			02	2320
II	Dormitory Block						
1	Tube Lights	20	33	5am	9am	5	3300
2							
3	Any other lights of 150 Watts						
4							
5	Ceiling Fans	75	51	5am 10pm	9am 5am	10	38250
6	UPS Batteries	300	09	9am	9am	24	64800
7	Exhaust fans						
8							
9	Electrical Water Heater of Watts						
10	Refrigerators Lab, Wellness center	100	02	9am	9am	24	4800
11	Any other Appliance of Watts						
12							
III	Kitchen & Dining						
1	Tube Lights	20	10	7am	7pm	12	2400
2							
3	Any other lights of ____ Watts						
4							
5	Ceiling Fans	55	04	6am	8pm	14	3080
6							
7	Exhaust fans						
8							
9	Electrical Grinders of Watts	200	01	5am	8am	3	600
10	Speakers	6000	01	5am	5.30am	0.2	1200
11	any other appliance of Watts Whisk Balace	13	01	6am	7am	01	13
12	Mixer Blender	700	01	6am	7am	01	700
IV	External Appliances						
1	Street Lights of ____ Watts	45	03	6PM	5am	11	1485
2	Bore Well Pump Set of ---- HP	6220	01	5am 4PM	10PM 10PM	11	68420
3	Pump set of ---HP						

4	Power Generator available Watts		
5	RO Plant of _____ LPH of Watts pumps	5000	01
TOTAL CONSUMPTION IN WATTHOURS			
TOTAL CONSUMPTION IN KiloWattHours(total w.			
Electricity Unit Rate			
TOTAL CONSUMPTION Charges for Estimated C			
consumption in Kilo Watthours) =			
TOTAL CONSUMPTION Charges as per Electrical			
Difference in BILL =			
6	General information ---- Category Supply II		
7	No of Students in the Institution		
8	Water tankers purchased for the month		
9	Municipal or Grammapanchayat Water connection availability. Yes or No., If Yes		
10	Whether Solar Power is available in the Institution. if Yes Watts		
v	Name and Designation of the person assigned to operate Electrical appliances and Water Supply system		

11/5/2024

Principal
SW RS/JC () 11/ @lauri Technical Assi

Principal
T.S. W.Res.
Degree College (Women)
Mahendra Hills, Hyderabad-500060

(2)

Nob
Principal
T.S. W.Res.
Degree College (Women)
Mahendra Hills, Hyderabad-500060

E-WASTE MANAGEMENT



GREEN CAMPUS INITIATIVES

TREE PLANTATION CAMP (2020)

- Our principal madam **Dr. G Nirupa**, faculty and even parents participated in this tree plantation Haritha Haram program.
- Each sapling was marked by a plate mentioning the batch that planted it.
- Faculty gave the information about the name and type of tree, color of its flower, its blooming season, and what students should do to take care of them

Nirupa
Principal
T.S.W.Res.
Degree College (Women)
Mahendra Hills, Hyderabad-500060



SOCIAL RESPONSIVENESS

TSWRDC, inculcate the social responsiveness among the students to make society or country in a way that makes a quality life & environment better and also a responsible citizen



- TSWRDC(W) MAHENDRA HILLS conducts Swachh Campus on every second Saturday of the month, to provide guidance to students on various aspects of swachhta for a clean and green campus.

-

Nob
Principal
T.S. W.Res.
Degree College (Women)
Mahendra Hills, Hyderabad-500060

- The main aim of this activity is to build swachhta skills in students and ensure they take ownership of maintaining swachh campus.
- In this camp students learn and develop a structured curriculum on environmental hygiene, sanitization and waste management.



- The Swachh campus activity has made our students aware of cleanliness and students have to stop throwing wrappers of eatables on roads & stop others from doing the same.
- It has also promoted the use of dustbins.
- Students along with faculty participate in this activity.



- Principal **Dr. G. Nirupa** actively participated in Swachh campus.

Nirupa
Principal
T.S.W.Res.
Degree College (Women)
Mahendra Hills, Hyderabad-500060



- Parents also participated in this drive by cleaning their surroundings.

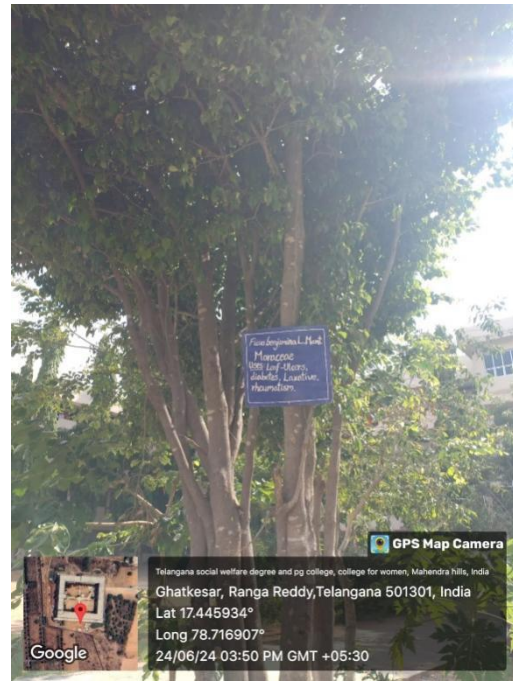


Nob
Principal
T.S. W. Res.
Degree College (Women)
Mahendra Hills, Hyderabad-500060

The implementation of green technologies within a wide range of campus activities

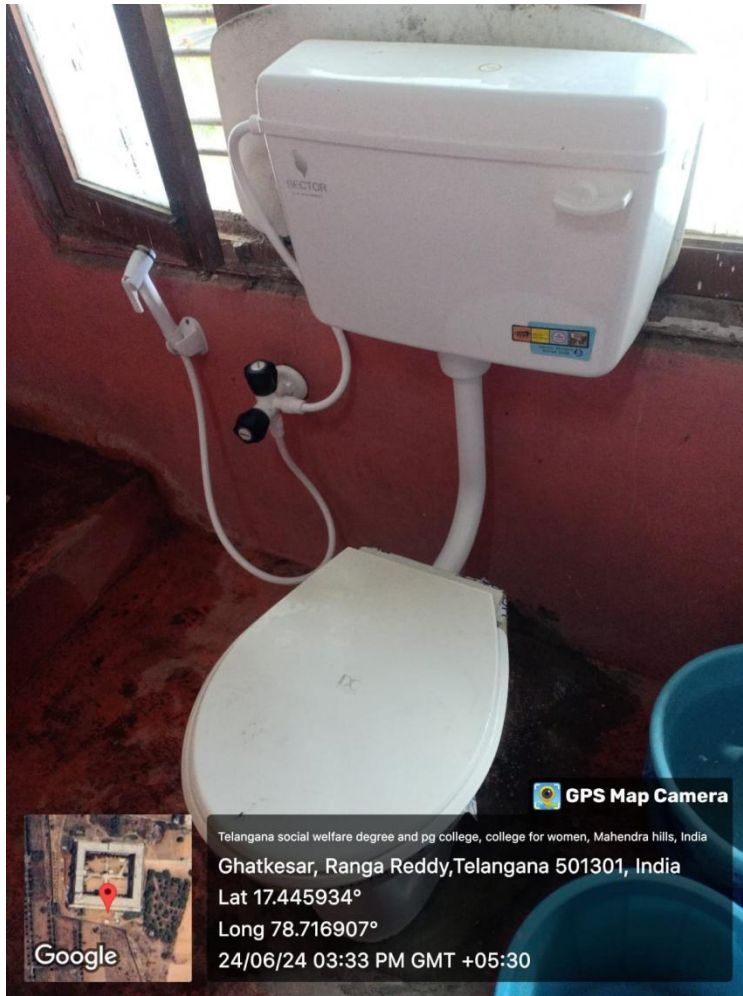


Neha
Principal
T.S.W.Res.
Degree College (Women)
Mahendra Hills, Hyderabad-500060



Neha
Principal
T.S.W.Res.
Degree College (Women)
Mahendra Hills, Hyderabad-500060

DISABLED-FRIENDLY, BARRIER FREE ENVIRONMENT



Nrb
Principal
T.S.W.Res.
Degree College (Women)
Mahendra Hills, Hyderabad-500060